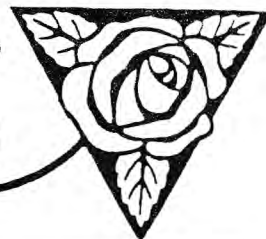


# RHODOS



Thursday, February 13, 1992

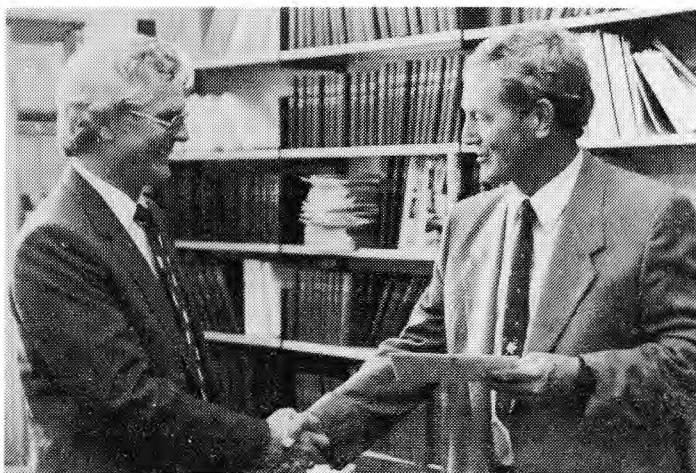
Vol 4 No 1

## Welcome to new staff

We hope you will be happy at Rhodes! Some may be a little surprised to find their names here, as several have been at Rhodes for a few months.

Miss Debbie Adamson  
Tick Research Unit  
Mr John Anderson  
Molteno Project  
Mr Doug Botha  
Building Maintenance Section  
Mr Dean Brady  
Biochemistry  
Mrs Sue Brooks  
Geology  
Mr Paul Candler  
Human Movement Studies  
Mr Lance Chandler  
Accounting, EL  
Ms Janet Cherry  
Political Studies  
Mrs Regina Chrisjan  
Allan Webb Hall  
Mrs Johanna Coetzee  
Business Information Systems, EL  
Mr Terence Coupe  
Engineering Section  
Miss Lara Cowley  
Library  
Mr Gerry Day  
Campus Protection Unit  
Miss Jan Disborough  
Accounting  
Mr Tim Downing  
Stanley Kidd  
Mrs Rochelle Els  
Library  
Mr Mike Emmett  
Accounting  
Mr Brian Fargher  
Centre for Social Development  
Mr Tony Fluxman  
Political Studies  
Mrs Patty Goetsch  
Institute for Water Research  
Mr Paul Goodwin  
Business Information Systems  
Miss Hazel Gqaboti  
St Mary Hall  
Mr David Gray  
Zoology & Entomology  
Mrs Priscilla Hall  
Adult Education Co-ordinator  
Miss Meg Hamilton  
Grounds & Gardens

Miss Kelli Hardman  
Public Relations Division  
Mr Johan Hert  
Computer Science  
Ms Jenny Hume  
Psychology  
Mr Ian Jennings  
Philosophy  
Miss Jane Larkin  
Library  
Professor Aubrey Levin  
Psychology  
Mrs Joy Lowe  
Jameson House  
Mr Sam Lubbe  
Business Information Systems  
Mr Zandile Manangana  
Grounds & Gardens  
Mr David Matyumza  
Grounds & Gardens  
Professor Paul Maylam  
History  
Mrs Hilane Mfengwana  
Jan Smuts Hall  
Mr Tex Moraladi  
Cory House  
Mr Lebona Mosia  
Political Studies  
Miss Alison Moss  
Law  
Mr Vusumzi Mshubeki  
Kimberley Hall  
Miss Jane Nulton  
Phelps House  
Dr Thobelo Nyokong  
Chemistry  
Miss Lianne Orsmond  
Pharmacy Library  
Mr Brian Peckham  
Law  
Miss Cathy Plumbley  
Beit House & Education  
Mrs Sue Pyle  
Education  
Mr Alistair Robertson  
Education  
Miss Noreen Shelver  
Rhodes Union  
Mrs Bonita Tarr  
Pharmacy  
Mr Scott Townley  
English, EL  
Mr July Tsili  
Grounds & Gardens  
Mr Franklin Twaku  
Grounds & Gardens  
Mr Hennie van der Mescht  
Education  
Mr Mario van Zyl  
Salisbury House  
Miss Sarah-Anne Wright  
Olive Schreiner



The Chief Technical Officer in the Department of Geology, Mr Rob Skae, (left) received The Vice-Chancellor's Award from Dr Henderson at the end of last year, to mark the completion of his BSc degree

## Walker for women

Due to the unprecedented demand for residence places by women students and the decrease in the demand by men it has become necessary to change a men's residence, Walker House, Kimberley Hall, into a women's residence.

The decision on the most suitable residence in Kimberley Hall had to take into account the following:

- the proximity of the residence to the central campus;
- the security of the residence. These two factors of necessity excluded Cullen Bowles, De Beers and Gold Fields Houses. In addition, Cullen Bowles House was unsuitable for women because it consists of three separate sections with access to each section extremely difficult.
- From a security point of view Piet Retief House is unsuitable because it is close to the quarry and a road used by people going to and from the developing township near the SPCA.

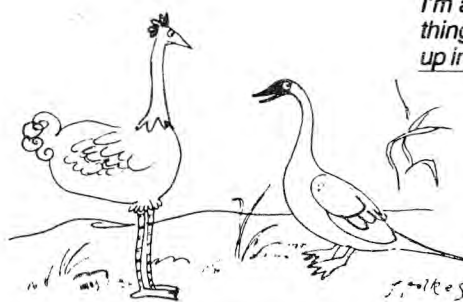
Stanley Kidd House is unsuitable because it has three separate buildings of which only one has direct access to the common room. In addition the third building houses post-graduate male students who could not easily be moved, many of whom are already in residence for their post-graduate studies.

Mrs Shelly Roodt, wife of the warden of Walker House, was the warden of Beit House until the end of 1991 and, as an experienced warden, is the most suitable person to assist Mr Roodt with the wardening duties without disrupting their home.

The male students previously living in Walker House are housed in the various other houses of Kimberley Hall.

## CONGRATULATIONS !!!

to Christiane and Hans-Martin Chee on the birth of their son Benjamin Daniel on December 25th.  
and Murray and Shirley Leibbrandt on the birth of a strapping son born on January 5, at Notre Dame, USA.



*I'm a smee and the odd thing is I frequently crop up in crossword puzzles*



# A dear friend and colleague...

*Eulogy delivered by Professor Brian Allanson at the memorial service for Prof J C (Doc) van Hille, on Tuesday, February 4.*

We have come together this afternoon to honour the life and memory of a very dear friend and colleague, Professor J C van Hille, known to his friends simply as Bob and to his students as Doc.

The shock of Bob's passing and the manner of it has reverberated throughout the land and friends of diverse qualifications, be they musicians, his past students or present colleagues, were stunned by the bitter tragedy. That such a gentle man should have his life ended in such a violent manner is beyond comprehension.

Our loss is irrevocable, but we are all supported by the many memories with which Bob's multifaceted personality has left with us. He served the community of Grahamstown and beyond for over half a century and throughout this service enriched the lives of so many friends and students.

His life's philosophy was firmly based upon the trinity of his family, his work as a university teacher and zoologist, and his music. And permeating all three were his penetrating peacefulness, gentility and humility.

Throughout his professional work in South Africa he supported and guided three heads of departments who required, and were given, the many riches of Professor Van Hille's experience and wisdom. It has been my privilege to have known and worked with Doc the longest of the three.

## Expression of confidence

As the remnants of the staff of the department went their various ways following the resignation of my predecessor, Professor D W Ewer, Doc became the focus of departmental stability around which the brave few who remained and those who were eventually appointed gathered in those (in retrospect) halcyon days when the department enjoyed the princely income of R700 with which to execute its educational responsibilities. As you can imagine, one of Bob's strengths lay in the fact that such meagre sums had been very much part of his experience - he had long since learnt how to cope with limited facilities, and it was surely because of his expression of confidence and hope that the department of Zoology and Entomology survived those lean days and contributed to my implicit faith that our needs would be satisfied - and they always were!

I often wonder how frequently we, as callow youthful academics, gave Doc cause for concern, but he kept his counsel. Perhaps he sought resolution of the despair he must have felt from time to time by recourse to his well known crossword puzzle sessions at tea. In this regard Doc and his small team of disciples could have matched the wisdom and erudition of the Senior Common Room across the campus in this particular linguistic endeavour.

## Capable hands

The end result of Doc's stewardship of the university department was a teaching and research centre in two of the biological sciences which has taken its place among the leading biological groups in the country. It is imperative to appreciate that because I knew that the undergraduate teaching was in such capable hands that we were able to penetrate challenging research areas within the freshwater and marine sciences, tick biology, biological control of insect pests and insect systematics to which Professor Van Hille contributed so significantly. It is gratifying to know that his research collections have been safely lodged in the Albany Museum.

No teaching a research group within our university could have been better served. This contribution was



fittingly recognized by the university in 1967 when Doc was appointed Reader in Zoology and he accepted the associate professorship in 1973. In 1967 he became an honorary research associate in the department and to commemorate his 50 years of service to the university was appointed as Associate Professor Emeritus in 1989.

We are all very sensitive of the fact that Bob was the epitome of an educated man. He spoke at least four languages, was widely read in music and literature, and it was in the practise of the former that he made such an overwhelming contribution to the musical life of our community. He made music with his friends and never failed to give generously of this gift - indeed no musical event would have been complete without Bob and his beloved cello.

But not satisfied with interests and activities which would have satisfied a lesser man, Professor Van Hille served on the Board of the Albany Museum for 24 years, for nine of which he was deputy chairman, and on his retirement was appointed an honorary research associate of the museum. Once again he contributed to the wider field of museology through his study of the signal towers of the eastern Province which had played a singular role in the settler, Xhosa confusion of the last century. His authority even here was without question.

I have left one of Bob's most endearing qualities until last - namely his remarkable facility with language. His humorous, cogent, delightful, and often spontaneous comment upon the current scene was always appreciated by his listeners whether at a farewell function, birthday parties or at more formal social occasions.

In saying farewell, let us accept the adjuration of Thomas A Kempis who in translation recommends that we

*Never be entirely idle; but either be reading, or writing, or meditating, or endeavouring something for the public good,*

as it succinctly portrays the code which Professor Van Hille followed during his rich and varied life.

## In Memory

A family man, erudite, humorous, unassuming, generous, kind, caring, loved and respected by all, a talented musician, modest and a superb raconteur. He was Bob van Hille. *Remembered by Pat Eva.*

# The Molteno Project, 1992

Over the last two years the scope and extent of the Molteno Project has grown considerably. The programme of second-language English teaching in black schools now reaches from the western Cape to Natal and to the north-eastern Transvaal. The Project has become a large scale non-government organization with an annual budget of several millions Rands.

Because the Project has expanded so quickly, it has become necessary to design a new organizational structure and new management procedures to enable the it to meet the challenges of the next few years successfully.

The reorganization aims to give the Project degree of autonomy commensurate with retention of its bond with Rhodes. This will also enable the project to retain its apolitical stance which is essential to its continued acceptance in a wide range of socio-political environments.

With most of the Project's activities concentrated in Johannesburg, it has been decided to transfer the management of the Project to the Braamfontein office, where the National Director will be based.

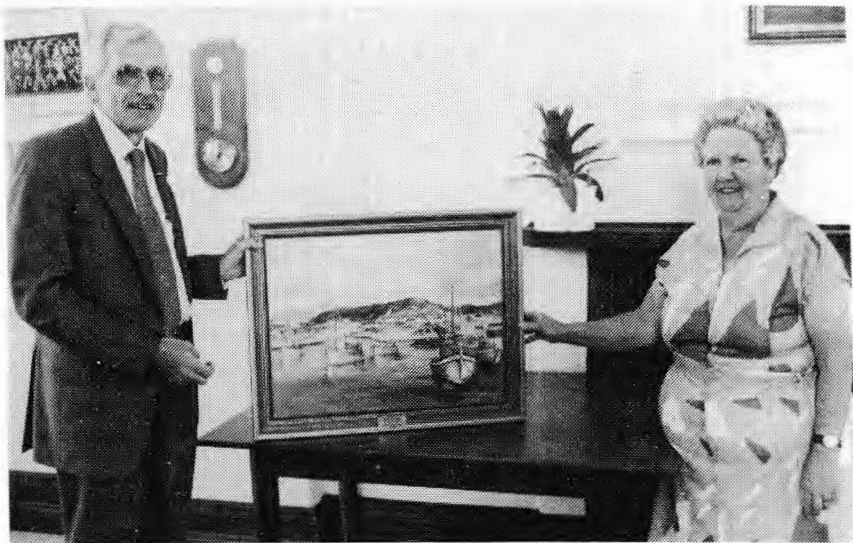
Mr John Anderson assumed duties as the National Director on December 1, 1991, while Professor Paul Walters, previously Director, will remain Molteno Professor of English in the Institute for the Study of English in Africa.

Discussions are under way to complete the managerial restructuring and establish a research and development arm of the Project. A recent donation of R500 000 from the Molteno Brothers Trust to endow a research post will enable a sound start to be made on developing a research programme.

We are sad to report the sudden death of Mr Harry Ndaba, of the Department of Geology, who died on January 22



Mrs Mary Brooks (right), who completed forty years of service at Rhodes last year, was recently presented with a picture of her choice by the Vice-Principal, Dr Michael Smout. The picture, which Mrs Brooks chose, is by George Chandler, of Kidd's Beach



# Economed Benefit Plan

## Scale of Benefits for 1992

The Scales of Benefits, upon which your benefits are based, have been increased by the Representative Association of Medical Schemes with effect from 1 January 1992 as follows:

Medical Practitioners	16.0%
Dentists	16.0%
Physiotherapists	15.0%
Private Hospitals & Day Clinics	16.0%
Services by other supplementary health service professions	plus minus 15.0%

It is also estimated that the price of medicines will increase in excess of 20% during 1992.

## BENEFITS

In order to provide for the inflationary effect of the aforementioned increases, the Management Committee has agreed to increase the benefits of your Plan for 1992. The new benefits are as per the schedule below.

We have also increased the threshold levels from which members receive payment at 100% of scale of benefit or cost. The 1992 thresholds and maximum member co-payment amount are as follows:

	1992 Threshold R	Maximum 30% Co-payment R
Member	800	240
Member + 1 dependant	1 600	480
Member + 2 dependants	2 200	660
Member + 3 dependants	2 700	810

It is through this member co-payment, and the incentive that it provides member to contain costs, that Economed has been able to maintain its contribution rates at a considerable discount compared to other schemes.

## CONTRIBUTIONS

The contribution increase which was implemented on 1 August 1991 partly provided for the abovementioned scale of benefit and cost increases. As a result of this, it is not necessary for your Management Committee to implement any further contribution increase on January 1, 1992. We will monitor the position of the Scheme during 1992 and make the appropriate adjustment at a later stage.

## ECONOMED PLUS

Many of our members have been approached in order to purchase policies from various insurance companies offering top-up cover. It is our intention to offer this cover ourselves for an additional contribution payment. This top-up cover will provide members with a benefit specifically designed to cover the gap between the charges of hospitals and doctors and the scale of benefit upon which the Scheme's benefits are based. The top-up cover will only be offered in respect of a stay in hospital and will apply in respect of conditions and illnesses which are covered by the Scheme.

We believe that the cost of this cover will be less than that of the health insurance policies. Our administration costs are very much lower and any surpluses achieved will remain within Economed for the benefit of members. Continuation of membership is also guaranteed in terms of our registration as a medical scheme.

The details of the top-up cover are presently being finalised and a further circular in this regard will be sent to you shortly.

## CONCLUSION

There has recently been much medical commentary on the state of medical schemes and the problems facing the industry. We wish to assure you that with the pro-active step taken by Meddent Medical Scheme to increase contributions timeously, MMS has positioned itself to ensure continued financial stability and growth in our reserves.

We would like to thank all member companies and members for their loyal support of MMS during the difficult year of 1991. We look forward to continuing to be of service to you in 1992 and wish you every success in the new year.

## Economed Plan 1992 Benefits

Type of Service	Present Benefit	New Benefit
<b>Prescribed Medicines</b>		
Levy on all scripts	R7	R9
<b>Special Dentistry</b>		
Single Member	1 500	1 800
Member + 1	3 000	3 600
Member + 2	3 750	4 500
<b>Auxiliary &amp; Para-Medical Services</b>		
Ambulance Services	750	1 000
Eye Tests (by registered optometrist)	40	50
<b>Alternative Hospitalisation</b>		
(a) Hospice: Accommodation per day	150	175
per day visit	30	35
(b) Private Nursing Limited per day	150	175
(c) Frail Care Centres Per day	100	125
Overall Limit	6 500	7 500
<b>Dieticians</b>		
Overall Limit	350	425
<b>External Prostheses</b>	4 000	4 600
<b>Spectacles &amp; Contact Lenses</b>		
Per Beneficiary	350	425
Per Family	1 050	1 275
<b>THRESHOLDS</b>		
Single	600	800
Member + 1	1 200	1 600
Member + 2	1 600	2 200
Member + 3 +	2 000	2 700

Note: Staff who belong to the UNIMED scheme should call Patrick Phillips for details of changes.



#### The Editor

Last term I received through internal mail two different chain letters both addressed by hand. I am astonished that such rubbish circulates in a university community. Whoever may indulge in such nonsense please note that I break these chains without a qualm and deposit the offending letters straight into the rubbish bin.

*Yours faithfully*

**Margot Beard**

*(It is worth noting that chain letters are illegal, as well as annoying - Ed)*

#### The Editor

I went to the panel discussion *The Rhodes Ahead* with high hopes of hearing about a new vision for the University. I left disappointed and with and with the strong feeling that Rhodes University is in a cul-de-sac. Where was all that critical, informed debate one is meant to hear within a university? I heard a great deal about Rhodes' present problems and performance but nothing about future challenges and visions.

In this time of transition there are so many questions which need to be asked and which weren't addressed during the panel discussions. For example, what new ideas are being generated about the role of the University in the new South Africa? What possibilities are being explored for involvement in the community around the University? What does community involvement really mean?

I appreciate that an evening's panel discussion is too short a time for in-depth exploration. But surely there is enough concern to warrant organising a major conference on the future of the University. I can't believe that Rhodes University is going into the 90s with the same ethos it had in the 50s.

*Yours faithfully*

**Rosemary Van Wyk Smith**

#### **Ellie's birthday present**

*by Norman Winter*

It took an empty 16-wheel Coke truck to deliver one case of Coke on the afternoon of January 23.

Much singing of "Happy Birthday" could be heard in the road outside the Admin offices. Inspection revealed one Coke truck, six or eight workers, two drivers and one senior clerk blocking the traffic for some ten minutes.

The occasion: Ellie's husband had her birthday present delivered to her office. A most unusual birthday present, but I am sure it will never be forgotten!

## **SASTS still growing**

*by Alison Terry*

The South African Students Travel Service is growing despite continual increases in bus and airfares. Last year we had an excellent year with many staff members availing themselves of our special fares to Europe.

This year we foresee a huge price war between airlines, mainly for super pex fares which do have many conditions attached, but SASTS continually negotiates fare deals with airlines specifically for university personnel. Already we have been given an excellent fare to London, open to all until May 31, for a ticket which is valid for one year.

From February, SASTS will be operated by its head office in Cape Town; but we have had a computer installed in our office which will enable us to give instant confirmations and availability for all domestic and most international flights.

SASTS is open to all students and staff and we strive to give friendly, efficient service to all.

For all travel enquiries please contact ALISON or ANIL at 26791 or come to see us in the Rhodes Union building.

## **R200 for their Winning ideas**

In response to the request for suggestions in October last year, 13 suggestions were received for November from members of staff of ways of improving the University's mode of operation.

The panel, comprising the Vice-Principal, the Registrar (Finance) and Director of Personnel, considered the submissions and decided that the prize of R200.00 should be shared by Dr Santi Daya and Mr Steve Oliver for their suggestion, which was independently submitted, to introduce re-usable envelopes for internal mail. These will be available from the Stationery Section and all staff are urged to use them.

Members of staff and students are reminded that suggestions which, if implemented, would save or make the University money or improve the way in which the University operates, should be submitted in writing to the Registrar (Finance) by the last day of each month. Unsuccessful suggestions will be carried forward for three months.

## **Some strange utterances...**

After a summer vacation indulging a passion for radio sports broadcasts rather than watching television, Peter Glover, of the Department of Education managed to collect some of the utterances which commentators and newsreaders must wish were missed.

When at one point the feed from the WP - Natal match in Durban was lost the station announcer concluded that "...the satellite must have gone behind the moon!" And during a match in which Kepler Wessels had batted particularly well we were told that "...on reaching his centenary he is being congratulated by his fellow compatriot." An old one, no doubt.

But it was not all cricket. In a Tottenham Hotspurs match, apparently, one of Gary Linneker's shots "went narrowly wide."

Nick Lanham, well known to some of us, was praising an overseas golfer trying to gain a place on the Sunshine Circuit. "This year", Nick told the listeners, "he has already won the Canadian closed open." And Peter Lindenberg the powerboating ace, we were informed, needed "...only a few more wins to get another championship below the belt." Some champion.

Finally, the 8 o'clock newsreader on January 18 set our minds to rest: "Unity in South Africa is now a fact - and the Rugby Football Union is firmly at the helm." It was only a matter of time!

## **The Silvas have friends**

You may be aware of the grievous loss suffered by Peter and Penny Silva when their house and most of its contents were destroyed by fire just before Christmas. While both the property and the household effects were insured, every householder knows that many precious and beloved items cannot be covered by insurance and cannot be replaced: books, pictures, favourite pieces of furniture or clothing, memorabilia - all the things that constitute the physical part of home.

In order to help the Silva family restore something of this home, a group of their friends have decided to establish a fund to be co-ordinated by Malvern and Rosemary van Wyk Smith. A special savings account will be opened for this purpose, receipts will be issued, and a list of contributors and donations will be kept to be presented (without, of course, the names of those who wish to remain anonymous) to the Silvas when the fund is closed.

The Silvas have been advised that the fund has been launched.

Cash contributions or cheques, made payable to the Peter and Penny Silva Fund, may be sent to or left at the following address: 24 Market Street, Grahamstown, 6140, or the Department of English Rhodes University.

## **From the CUP...**

A certain political organization recently claimed that it had information to the effect that all gratuities to persons who retire from universities would be suspended as from the end of January 1992. The Minister concerned was furthermore asked to confirm allegations to the effect that the CUP had been fully informed and had already debated the issue.

We are in a position to state categorically that there is no truth whatsoever in this rumour. The CUP had never debated such an issue, neither had it been asked to do so. It is also inconceivable that the CUP would acquiesce to such a decision in secret or that the Associated Institutions Pension Fund, to which universities belong, would select one sector of its members for such a unilateral withdrawal of benefits. A telephone call confirmed that the Department of National Education, the Department of Finance and the Commission for Administration knew nothing about the matter. Such public rumour-mongering about a very sensitive issue when the veracity of the information could easily be ascertained, can only be deplored.



# RU Women's Association Gala Luncheon



Prof Guy Butler, Mrs Jean Butler and Mrs Thelma Henderson with (seated) Dr Amy Jacot Guillarmod

The third Rhodes Women's Association Gala Luncheon, held in November, was an outstanding success with 88 people attending. The redecorated Rhodes Club with its attractive flower arrangements and beautifully adorned tables, was the ideal venue.

The guests of honour were Prof and Mrs Guy Butler. Special guests included Dr Amy Jacot-Guillarmod, the most senior member of the club, Mrs Barbara Clarke, and Mrs Valerie Letcher.

It was agreed that the luncheon provided by the club was mouth-watering and aesthetically pleasing. The piece de resistance was our Professor emeritus of English, Guy Butler, who was introduced by Sally Terry.

Prof Butler chose to speak about the formidables of Grahamstown.

He began with Elizabeth Salt, the lady who carried gunpowder in a whasket and passed throughout the UP Khosa lines unmolested. Prof Butler then recounted the story of the unknown settler who was crossing the river in spite with her husband. He was in the river, she on the bank with her piano. He chided her as she whistled while helping him. She said "New husbands are easy to find for St Albans, pianos are scarce!"

He went on to tell of: Harriet Ward, the ghost in the Lodge famed for her writings and her novel, Jasper Lyle.

Notre Mere from Brussels who founded the Assumption Order that eventually stretched from Grahamstown to Egypt, Biafra and Ireland. Cecile Isherwood, the founder of the Community of the Resurrection of Our Lord with its schools, or-

phanage and training college.

Rosie O'Grady, the businesswoman who bought the Butler's house one morning for 500 pounds sterling and sold it that same afternoon for 1 500 pounds sterling.

Mary Waters, the daughter of an Anglican missionary who came to Grahamstown in the 1930s and taught in our Education Department. She was a rigorous and unconventional woman. She spent her retired years teaching at St Clements and was greatly loved by the community. A school was named after her by public acclaim.

Mrs Starr Stewart or Mrs Bar-nothing as she was known, was great at demolishing people with her sharp tongue. When she was finally torpedoed and picked up by a U-Boat, the commander instantly regretted his decision!

Josie Wood, the found of the Library for the Blind. Her contribution was to the whole of South Africa.

Prof Butler ended his speech with a tribute to Thelma Henderson, the President of the Rhodes Women's Association who since her arrival in the City has enhanced the status of the VC's wife and also made an indelible mark on the community. She is a fundraiser par excellence having diverted large sums of money from the business communities of South Africa and worldwide to support all levels of local education. The CSD is a monument to her endeavours.

Prof Butler was thanked by Mrs Olive Christenson, and Mrs Henderson thanked those who had worked to make the gala luncheon another memorable occasion.



Mrs Val Letcher, Mrs Sally Terry, Mrs Barbara Clarke and Mrs Thelma Henderson

## Desertification programme at Rhodes University

by Kate Rowntree

Desertification is a serious problem in many parts of Africa, not least in South Africa itself. According to Preston-Whyte and Tyson (1988) desertification is "the impoverishment of arid, semi-arid and some sub-humid ecosystems by the combined impact of man's activities and drought". Mismanagement of the land results in deterioration of vegetation cover, a change in hydrological response towards less water retention and increased flood runoff, and erosion of the soil. In combination these processes push the landscape towards a more desert like condition.

Removal of vegetation cover is generally the first human induced process leading to desertification. Usually the human impact is either indirect, for example through overgrazing by livestock, or it is the result of economic necessity, such as through fuel wood gathering, or of economic greed as in the case of the despoliation of Amazonia. Here at Rhodes University we have a unique case of desertification where the motivation is, apparently, aesthetics, and men the direct agents.

To view this interesting experiment in landscape degradation take a walk through Quad 2, or look down from the heights of the Geography Department into the once vegetated basin below. Where roses, hibiscus and a mixture of green shrubs once flourished, bare patches spread insidiously into the remaining grass now left open to the full strength of the sun.

The once luxuriant shrubbery is ripped out, to be replaced by rocky koppies and a scatter of monospecific trees. In a simulation of the results of overgrazing, the more palatable, attractive species are removed to make way for less palatable varieties. In these environmentally aware times, the call for tree planting is a common one ... but not at the expense of the established vegetation.

Analysis of development programmes instituted over the last fifty years is increasingly demonstrating that environmental crises are often the result of a lack of consultation between the user of the land and the ivory tower planner (Mann, 1990). Please, don't let Rhodes University repeat this mistake.

Consultation with those who walk through or look down into Quad 2, (and other areas of the Campus undergoing similar development programmes), should result in an environment which is aesthetically pleasing and a development programme which is far less expensive.



---

# This and That ...

---

## Up they go - again

Due to escalating costs of photo-copier maintenance and the need to replace ageing machines more speedily, it is necessary to increase photo-copier charges.

From February 1, 1992 the following charges apply:

- Administrative & Academic Departments: 11c per copy
- Students: 13c per copy

A4 white paper will continue to be drawn against photo-copier pool Account No 5113 401 112.

---

## Permission to undertake private work

In terms of their conditions of service, staff members may not undertake remunerative work in addition to their duties to the University without the prior permission of the Vice-Chancellor.

A staff member wishing to undertake private work is required to complete the appropriate form, obtainable from the Director of Personnel, to whom the completed form should be returned.

---

## Lost Property

Remember that the Campus Protection Unit operates a Lost and Found Section.

Members of staff who find lost or abandoned property are asked to ensure that it is either taken directly to the Campus Protection Unit in Rhodes Avenue for safe-keeping or that it is handed to their immediate superior.

Staff members who lose property are advised to report the details to the Campus Protection Unit as soon as possible so that the loss may be recorded and the Found Property records checked. The Campus Protection Unit will contact the person concerned if the lost item is recovered.

---

## Travellers to the UK - please note

Would any academics who will be in the United Kingdom on June 20 1992 or 2 October 1992 please call the Public Relations Department on extension 516 in connection with the Old Rhodian Reunions taking place at these times. Please ask to speak to Jenny.

---

## Picnics

Requests for picnic meals must be made in writing to the General Manager, Catering and Housekeeping Services or Controller Food Services at least 48 hours before they are required. Requests must be signed by the Secretary of the Society or body concerned and specify the date and time, the names, meal card numbers and Halls of those students going on the excursion. In the case of Departmental excursions, they must be signed by the Head of Department.

Caterers may not supply picnic meals without authority from the General Manager, Catering and Housekeeping Services or Controller Food Services

Picnic meals will only be supplied to students in the following circumstances:

- When Sports Union teams are playing away from Grahamstown;
- when Departmental excursions formally sponsored by the Head of Department concerned have been arranged;

Should the Sports Union or Departments require picnic meals for Oppidans, a charge of R4.00 will be charged to the Sports Union or Department concerned. Collection from Oppidans is left to the Sports Union/Departments.

The Registrar has asked that the Dean of Wardens be contacted at least two days before the event, where women students are concerned, so that the Hall Wardens concerned can be informed.

No picnic meals will be supplied to groups of students who do not form

---

## 'Moenie pla, ou Swaar vir die ou dae

I remember the Biltong, Bobotie en Braai,  
En die Blatjang en Bredie were good for a try.  
And we drank lots of Castle and Witblitz it's true,  
And we had sunny skies and Chevrolets too.

We also had Broeders up there in high places,  
We didn't have names, we never saw faces,  
But take it from me, of vra vir my moeder,  
Behind every bush I could show you a Broeder.

The Commies were up to their usual tricks,  
converting the clergy and using the flicks.  
The Onslaught was Total I tell you ou swaar  
From the Russians, the Cubans en "Roomse Gevaar".

We also had Chris, Chris Heunis of course,  
Who was planning a future for all to endorse.  
We'd switch on the telly to hear what he'd said,  
But we needed decoders to follow his thread.

I remember the hawks like old Magnus Malan,  
who said all along that 'n boer maak 'n plan,  
And the plan was quite clear, dit was bloed in die sap  
to give Fidel Castro 'n donderse klap.

And lest we forget that ultimate thrill,  
The sight of PW - dus die "Groot Krokadil" -  
chastising the West and reflecting upon  
Our Stygian choice, to cross Rubicon.

Our exports were booming and that was for sure,  
Like "Outspan" en "Rooibos", all homegrown and pure,  
We sold to the world but you must understand  
Why most of our products were marked "Swaziland".

I remember the Fah-fee Fanagalo,  
And Barclays Bank was the biggest you know.  
Maar toe kom die sanksies and boycotts and all,  
And Barclays was gone, and so was Chris Ball.

We also had liberals of two kinds you know:  
The one lot for real and the other for show.  
There were liberals like Zac, the salt of the earth,  
While the others had packed up and pushed off to Perth

I remember the naartjies injected with Cane  
We took to the rugby or on the Blue Train,  
Or picked from the branches op "oubaas" se plaas,  
to sneak into Loftus to throw at old Naas.

Our heroes had nicknames like "Ertjies" en "Vleis",  
"Domkrag" en "Baksteen", "Vlam" en "Volstruis",  
There was "Lappies" en "Pompies" en lusiter nou mooi,  
There was "Piston", "Snakes" Snyman en "Hempies" du

We also had Qwa-Qwa, an odd sounding place,  
Reserved for the Qwa Qwas and those of that race.  
En die ou Staatsbeamptes were having a ball  
Deciding which Qwa was a Qwa after all.

Nou alles verander, dus 'n moerse gemors,  
Maar ons het nog ons juskei, ons pap en ons wors.  
I can still get my Bugu, my veldskoene en twak  
En als is nog reg as daar's geld in die sak.

I tell you ou swaar I don't care what they do.  
They can say what they like at CODESA it's true.  
But there's one thing for sure that they'd better not try,  
And that is to stop this old boer from his braai.

Alles van die beste vir die Nuwe Jaar souties,  
OOM SCHALK



# Recommended procedure for protecting a PC against viruses

by Tim Bouwer

Note: This is a continuation of the series on viruses carried in the last two issues of Rhodes last November

If you implement the procedures described here, and your PC gets infected with a virus, please contact the PC support staff in the Computing Centre as soon as possible. We will then be able to identify and fix any weakness in these procedures and also to assist you in clearing the virus.

The Computing Centre staff will not assist you if you have not taken these minimum steps.

Infection by viruses in this event may therefore result in your disk having to be wiped clean to clear the virus. You will then have to rely on your backups to reload your work.

## Minimum protection by individuals

Each person who has a computer is required to do the following if they are using a hard drive computer. People with dual floppy drives computers should use a disk prepared as described below.

Arrange for Electronic Services to install the hard-drive write protect facility developed by the Computer Science department. This card will cost R120, but the price is expected to be much lower when large numbers are ordered.

(Note that this may require reorganization of your hard drive.)

Install the current copy of VIRALERT.COM onto your hard drive in the BIN directory (create a BIN directory if you do not have one). The current copy can be determined by the date of VIRALERT.COM and a copy is kept in the Computer Science software library. This will be on a floppy disk with instructions on how to install it. The secretary or technician of the Computer Science department will be able to let you know what the latest release is for VIRALERT.COM (ie the date of the latest copy) and a letter will be sent to all departments when new versions are released.

VIRALERT.COM is freeware and can be copied freely without obligation.

Install the latest copy of McAfee's SCAN.EXE onto your hard drive in the BIN directory.

This program is copyrighted and you must arrange for a copy to be purchased for your computer. The Rhodes buying officer will be able to inform you of the cost.

Once you have licensed your copy of SCAN.EXE you will be able to obtain updates from the Computer Science software library.

The secretary of the Computer Science department will be able to tell you which version number is the most recent.

Letters will be sent out to departments with licensed copies of SCAN.EXE to inform them when new releases are available.

Install MONDAY.EXE on your hard drive in the BIN directory. This is a program which detects whether it is Monday and can be used for automatic weekly scans of your hard disk (see below).

This program will be available on the disk which contains VIRALERT.COM in the Computer Science software library.

## A departmental CLEAN disk

In addition to the protection mentioned above, the following must be done in each department. Copies of the disk described below must also be available to people with dual floppy machines for detecting and removing viruses on floppy disks.

For departments with no secretaries or where local access to such a disk is impossible, a disk such as the one described below will be available in the Computer Science software library.

A disk with the latest SCAN and CLEAN programs is available in the Computer Science software library. Once you have made arrangements with the buying officer, obtain this disk and copy it. The disk is kept in the library as the "McAfee SCAN and CLEAN bootable disk". NOTE: These programs are copyright and are not made available for free copying. You are required to make your own arrangements for the purchase of these programs. They are stored in the software library for the convenience of licensed users and illegal copying of this disk is theft and could result in your prosecution.

This disk must be placed in a safe place in the secretary's office and members of staff who have computers must have access to it. These staff members must also be able to use SCAN.EXE and CLEAN.EXE

## How to SCAN disks.

The program SCAN.EXE is executed in the following manner: NB There are no foolproof methods. This does not ALWAYS work.

Note also that if SCAN.EXE is infected with a virus it could cause more trouble than it saves.

♦ (Continued on P8)

## No money through the mail

by Mr Les Reynolds

We have discovered that departments are sending money to the Finance Division through the internal mail in used envelopes. This leads to the loss of money and then investigations which are time-consuming and fruitless.

Departments are asked to ensure that any cash destined for the Finance Division, or for any other department, be placed in a sealed envelope, the amount indicated in a delivery book and a signature obtained from the person receiving the money.

## Honour for former staff member

With great pride that we announce that the Reverend Dr Peter Hinchliff, a former Professor of Ecclesiastical History at Rhodes, has received the most prestigious appointment in his field from Her Majesty the Queen.

The Dr Hinchliff was appointed to the Regius Chair of Ecclesiastical History at Oxford on January 6.

## Adult education

by Priscilla Hall (Co-ordinator)

Should Rhodes create an Adult Education Centre? The idea began in 1989 and a decision will probably be made by the end of this year, after some research and piloting. A co-ordinator has been appointed for 1992 to do the main work, backed by a senate committee and two sub-committees.

Adult Education (AE) in 1992 will start a few basic skills courses on subjects identified by a Rhodes NEHAWU survey last year. They will be on Xhosa and English enrichment, computer literacy, catering, first aid and, maybe, driving. NEHAWU members will use them first and test them out. The courses can then be extended to particular sections of the community. There will also be events for the general public - RhodesFest etc - testing the area of continuing education.

The main research is by consultation at Rhodes, with other univer-

sities in South Africa (Rhodes is notably a latecomer), and with non-governmental organizations; and the community. Basic assumptions so far are that AE should be genuinely developmental; we should think regionally in terms of the eastern Cape, however small our initial projects; and the work should suit the expertise of a university. Questions include: in what respects can RU become a community asset? and in what ways can research and other RU activities benefit from closer community contact?

I will be based at ASP on Ext 171 or 173 until an AE room and phone are supplied. I will be discussing widely on campus in the next few months. Please contact me with information of any community involvement that your department already has, and ideas or problems that might be pertinent to AE in the East Cape.

## The Semiotics of Political Transition

Vista University is calling for papers for a symposium on the Semiotics of Political Transition.

Sub-themes include:

- Political Rhetoric
- Symbolism and Politics
- Constitutions
- The role of music, art, literature, humour, satire, the media, etc in times of political change.
- The semiotics of political violence
- The semiotics of constitu-

tional/(state) security/ para-military structures

- The semiotics of criminal acts in times of political change

Closing date for submission of titles of papers is February 28, and can be posted to The Organisers, Semiotics Colloquium, Vista University, Private Bag X613, Port Elizabeth 6000.

For further information, contact Professor Nan van den Bergh, Department of Public Law, or Mrs Kezia da Silva, Public Relations. Tel: 041-662755 Fax 041-642859.

## RHODOS DEADLINES

Publication date	Copy date
27 Feb	17 Feb
12 March	2 March
26 March	16 March
16 April	6 April
30 April	20 April
14 May	4 May



## WHAT'S ON



### Friday, February 14

Valentine Party,  
• Great Hall, 19:30

### Clubs Evening,

• Great Hall, 17:00 to 22:00

### Tuesday, February 18

Introductory Wine Tasting

### Wednesday, February 19

Miss Fresher,  
• 19:30 to 23:00

## SMALLS

### • ADVERTISING RATES •

Block ads: R2,00 per col cm, double for back and front pages. Classifieds: R0,10 per word. Advertising is run on a strictly cash basis. Please take your copy to the Public Relations Division.

### PROPERTY

#### SETTLER PROPERTIES

Buying or selling a property? For a professional efficient and friendly service contact Laraine Haydock ... not at the Printing Unit but at Settler Properties. Tel 25448 (w) or 22938 (h).

### ACCOMMODATION WANTED

Two-bedroomed accommodation wanted to rent. Please phone Robin Tilney, ext 416, or home 24806.

### WANTED TO BUY

One Fridge in good working order. Please contact Peter Kilpatrick at ext 212, or home 23080.

### RHODOS STAFF

Editor: Mary Burnett (ext 517)  
Reporter: Kelli Hardman (ext 517). Cartoonist: Mike Ginn

*Rhodos is produced twice a month by the Public Relations Division, Rhodes University, Grahamstown. The views expressed are not necessarily those of the Editor, Rhodos Staff, or the University. Contributions from any member of the Rhodes community would be welcomed.*

## Minor maintenance matters

By Mr Phil Murray

Although the University's maintenance sections, including Grounds and Gardens, have a programme to keep the University in good shape, the work load is such that some things which require attention, once properly identified, are not always noticed by them. In dealing with the specifics of a range of problems every day, it is inevitable that various other matters needing attention will not be recorded.

For this reason we welcome the input of all members of the University community in bringing to attention the little things (or big ones) which detract from the good appearance of the University, its buildings, roads, paths, sportsfields and gardens and lawns. At night this obviously includes street lights and lights in public areas.

Matters needing reporting are often in public, general or common-user areas of the Campus, mostly out-of-doors.

All staff members are asked to bring to attention any defects or problems which they notice. We prefer reports by way of maintenance requisitions (Grounds and Gardens will accept internal memos) but if it is more convenient to use the telephone, then please do so. The PABX extension numbers to use are:

- Building Maintenance 421/422

- Engineering Maintenance 236/238
- Electrical Maintenance 234 (leave details with Transport Clerk who provides clerical support to the electricians)
- Grounds and Gardens 240/241 (preferably before 12:00 when the part-time clerk leaves)

We cannot promise immediate attention to matters so reported; we do not have the staff for this. Matters will be attended to as soon as possible bearing in mind other work waiting for attention. Please don't give up if the matter you reported last week or last month hasn't been done yet. Some jobs will not be dealt with until, for instance, a building is completely re-decorated. Delays can also be caused by examination times etc.

When sending in maintenance requisitions, they should be folded, stapled or pinned, and the name of the maintenance section written on the outside. The same applies to internal memos (or requisitions) sent to Grounds and Gardens. Delays can be caused by putting them in envelopes.

Your co-operation will be much appreciated and, we hope, will result in a neater, well-cared-for looking Campus of which we can all be proud.



*I used to have a lot of deep seated resentments, but with therapy they've become much more shallow-seated.*

### ♦ Protecting against viruses Continued from P1

#### On a HARD DRIVE computer (which must be free of viruses).

To SCAN a hard drive type SCAN C:

at the DOS prompt.

To scan floppy disks type

SCAN a: /many or SCAN b: /many

at the DOS prompt (use a: or b: depending on which drive you wish to use).

You may omit the /many if you only have one disk to SCAN.

Take note of any messages that refer to viruses, in particular, the virus name (which would appear between square brackets eg. [stoned]).

#### To SCAN a floppy disk on a computer with only dual floppy drives.

Boot the computer with the floppy disk prepared as above.

Type SCAN B: /many

(The /many may be omitted if you only have one disk to scan).

#### How to clean disks of viruses

The program CLEAN.EXE is executed in the following manner (note that this is not always successful):

Turn your computer off and insert your copy-protected disk containing SCAN.EXE and CLEAN.EXE (see 2) into your disk drive. Turn the computer on again.

When the computer shows the A: prompt, you proceed as follows, depending on whether you are cleaning the hard drive or floppy disks: For a HARD DRIVE type CLEAN C: [virusname] or CLEAN D: [virusname] if you have a D drive

For FLOPPY DISKS type

CLEAN B: [virusname] /many

You may omit the /many if you are only cleaning one disk.

REPLACE VIRUSNAME WITH THE NAME OF THE VIRUS THAT WAS REPORTED BY SCAN.

CLEAN C: [PING].

♦ (To be continued)

## Rhodes University Wine Cultural Society

Rhodes University Wine Cultural Society (formally Rhodes Wine Tasting Society) began in July 1987 after a year of talks with the SRC and SFW.

That year our best taster won the first Tassenberg National Wine tasting Intervarsity. In 1988 the society's team came second and 1989 third, in the competition now known as the Nederburg National University Wine Tasting Competition. In the five years that the society has competed in a regional Intervarsity with UPE wine tasting group (BACCHUS), Rhodes has won each year. Tasters have also competed in such events as the Zonnebloem Wine Taster of the year. Our Honourary President (Prof John Haig) won the competition in 1986, and our Chairman (1990 to 1992), Mr B. Sonnenberg, came second in 1989 and third in 1991.

The society is committed to taking part in competitive tasting events and to the education of members into the culture of wine. Our objectives are:

- To promote an awareness of the

cultural aspects of wine amongst the Rhodes Community.

- To provide the Rhodes Community with the opportunity to receive education about the making, drinking and etiquette of wine.

- To provide the Rhodes Community interested in wine the opportunity to meet with like-minded people for the purpose of tastings and discussions.

The society in conjunction with the Cape Wine Academy also runs Internationally accepted courses on wine making and the culture of wine. Members have completed both the Preliminary and Certificate courses. The society hopes to run courses in the Diploma 1 and 2 course in 1992.

Our membership is open to the entire Rhodes Community, staff and students. We are committed to educate other students in to the evils of alcohol abuse and thus, took part in the "Buddy" campaign at Rhodes. The society hopes to become more involved in the this campaign this year.